

## SARC Information

By February 1 of each year, every school in California is required by state law to publish a School Accountability Report Card (SARC). The SARC contains information about the condition and performance of each California public school. Under the Local Control Funding Formula (LCFF) all local educational agencies (LEAs) are required to prepare a Local Control and Accountability Plan (LCAP), which describes how they intend to meet annual school-specific goals for all pupils, with specific activities to address state and local priorities. Additionally, data reported in an LCAP is to be consistent with data reported in the SARC.

- For more information about SARC requirements and access to prior year reports, see the California Department of Education (CDE) SARC web page at <https://www.cde.ca.gov/ta/ac/sa/>.
- For more information about the LCFF or the LCAP, see the CDE LCFF web page at <https://www.cde.ca.gov/fg/aa/lc/>.
- For additional information about the school, parents/guardians and community members should contact the school principal or the district office.

## DataQuest

DataQuest is an online data tool located on the CDE DataQuest web page at <https://dq.cde.ca.gov/dataquest/> that contains additional information about this school and comparisons of the school to the district and the county. Specifically, DataQuest is a dynamic system that provides reports for accountability (e.g., test data, enrollment, high school graduates, dropouts, course enrollments, staffing, and data regarding English learners).

## California School Dashboard

The California School Dashboard (Dashboard) <https://www.caschooldashboard.org/> reflects California's new accountability and continuous improvement system and provides information about how LEAs and schools are meeting the needs of California's diverse student population. The Dashboard contains reports that display the performance of LEAs, schools, and student groups on a set of state and local measures to assist in identifying strengths, challenges, and areas in need of improvement.

## Internet Access

Internet access is available at public libraries and other locations that are publicly accessible (e.g., the California State Library). Access to the Internet at libraries and public locations is generally provided on a first-come, first-served

basis. Other use restrictions may include the hours of operation, the length of time that a workstation may be used (depending on availability), the types of software programs available on a workstation, and the ability to print documents.

## School Mission Statement (School Year 2021-22)

The mission of Vista Real Charter High School is to provide a student-centered, high-quality secondary education for all learners through a safe, supportive, trauma-informed community where students are encouraged to self-advocate, take control of their education, and explore new opportunities and skills in the pursuit of becoming contributing members of society.

In order to carry out this mission, Vista Real strives to equip students in this community with the educational skills necessary in the 21st century – the ability to read, write, speak, and calculate with clarity and precision and the ability to participate intelligently and responsibly in a global society. The school offers alternative educational avenues through which students can acquire the knowledge necessary to make a difference in their lives. A combination of site-based learning, independent study, and distance learning allow for flexibility and personalization of each student's educational experience.

The school provides a diverse, student-centered environment in which all learners are held to high academic and behavioral standards. Students work in collaborative relationships with a comprehensive team of educators, counselors, and support staff who work with them on a one-on-one basis to personalize their learning. Vista Real seeks to develop students who are competent, self-motivated, life-long learners. In order to accomplish this, the school emphasizes increased parental involvement, trauma informed care, attention to different learning styles, student-driven participation in the learning process, technology access, and choices in curriculum pathways.

Vista Real places a strong emphasis on parental involvement in the learning process. Parents/Guardians are viewed as an essential link in improving education; therefore, parents/guardians are encouraged to participate through frequent communication with teachers, participation in school related functions, and attendance in school sponsored parent development workshops. By providing an avenue for meaningful parental involvement, Vista Real strives to bridge the gap between school and home. It is the hope of Vista Real that students will have a team of supporters both in and outside of school so that they witness first-hand their parents and teachers working together to make a difference in their education and future.

Vista Real Charter High School • 401 S. A St. Suite #3 Oxnard, Ca 93030 • (805) 486 -5449 • [www.vrchs.org](http://www.vrchs.org)

County-District-School (CDS) Code: 56-10561-0109900 • Grades: 9-12

**Principal:** Sharie Strasburger, Jonathan Oates • [principal@vrchs.org](mailto:principal@vrchs.org) | **Area Superintendent:** Corrine Manley



## School Description and Profile (School Year 2021-22)

Vista Real is a WASC accredited, public charter school that offers a personalized educational program for high school students/families who prefer an Independent Study model to meet their academic needs. Typical students are those who want an alternative to the local, public school systems and seek a program that allows them the flexibility to learn at their own pace. Most students come to Vista Real because they were unsuccessful in the traditional high school setting or they needed a more personalized approach to education. Other students need the flexibility of an independent study model to meet family obligations such as work or caring for a child or they seek freedom from the social demands of a traditional high school. Regardless of the reason, the school offers a uniquely structured academic program, rigorously guided by the California Subject Area Content Standards that provides a challenging, yet highly individualized, educational program for students.

### School Enrollment

TABLE 4: STUDENT ENROLLMENT BY GRADE LEVEL (SCHOOL YEAR 2020-21)	
Grade Level	Number of Students
Grade 9	432
Grade 10	486
Grade 11	408
Grade 12	173
Total Enrollment	1,499

TABLE 5: STUDENT ENROLLMENT BY STUDENT GROUP (SCHOOL YEAR 2020-21)	
Student Group	Percentage
Female	54.0%
Male	45.9%
Non-Binary	0.1%
American Indian or Alaska Native	0.3%
Asian	0.4%
Black or African American	1.2%
Filipino	0.3%
Hispanic or Latino	74.1%
Native Hawaiian or Pacific Islander	0%
Two or More Races	2.2%
White	20.9%
English Learners	12.1%
Foster Youth	3.1%
Homeless	6.6%
Migrant	0.1%
Socioeconomically Disadvantaged	77.4%
Students with Disabilities	19.1%

### A. CONDITIONS OF LEARNING

#### State Priority: Basic

- The SARC provides the following information relevant to the State priority: Basic (Priority 1):
- Degree to which teachers are appropriately assigned and fully credentialed in the subject area and for the pupils they are teaching;
  - Pupils have access to standards-aligned instructional materials; and
  - School facilities are maintained in good repair

## Teacher Assignment

The school recruits and employs qualified credentialed teachers who meet all credential requirements in accordance with State of California guidelines. This chart displays information about teacher credentials at the school.

*Note: As an independent charter school, the school's program, resources, and administration are run independently from the sponsoring district, so there is no district data to report for comparison in this section.*

**TABLE 6: TEACHER PREPARATION AND PLACEMENT (SCHOOL YEAR 2019-20)**

Authorization/Assignment	School Number	School Percent	State Number	State Percentage
Fully (Preliminary or Clear) Credentialed for Subject and Student Placement (properly assigned)	74	99%	23,750	Exceptions 93% Appropriate Assignments 7%
Intern Credentialed Holders Properly Assigned	1	1%	Information Not Available	Information Not Available
Teachers Without Credentials and Misassignments ("ineffective" under ESSA)	3	4%	43,278	Exceptions 63% Misassignments 37%
Credentialed Teachers Assigned Out-of-Field ("out-of-field" under ESSA)	64	85%	Information Not Available	Information Not Available
Unknown	N/A	N/A	N/A	N/A
Total Teaching Positions	75	100%	Information Not Available	Information Not Available

*Note: The data in this table is based on Full Time Equivalent (FTE) status. One FTE equals one staff member working full time; one FTE could also represent two staff members who each work 50 percent of full time. Additionally, an assignment is defined as a position that an educator is assigned to based on setting, subject, and grade level. An authorization is defined as the services that an educator is authorized to provide to students.*

## Teacher Misassignments & Vacancies

Misassignments refers to the number of positions filled by teachers who lack legal authorization to teach that grade level, subject area, student group, etc. Teacher vacancies reflect the number of positions to which a single designated certificated employee has not been assigned at the beginning of the year for an entire semester or year.

**TABLE 7: TEACHERS WITHOUT CREDENTIALS AND MIS-ASSIGNMENTS (CONSIDERED "INEFFECTIVE" UNDER ESSA) (SCHOOL YEAR 2019-20)**

Authorizations/Assignments	Number
Permits and Waivers	3
Misassignments	8
Vacant Positions	0
Total Teachers Without Credentials and Misassignments	11

**TABLE 8: CREDENTIALLED TEACHERS ASSIGNED OUT-OF-FIELD (CONSIDERED "OUT-OF-FIELD" UNDER ESSA) (SCHOOL YEAR 2019-2020)**

Indicator	Number
Credentialed Teachers Authorized on a Permit or Waiver	0
Local Assignment Options	1,205
Total Out of-Field Teachers	64

**TABLE 9: CLASS ASSIGNMENTS (SCHOOL YEAR 2019-2020)**

Indicator	Number
Misassignments for English Learners (a percentage of all the classes with English learners taught by teachers that are misassigned)	3%
No credential, permit or authorization to teacher (a percentage of all the classes taught by teachers with no record of an authorization to teach)	0%

Note: For more information refer to the Updated Teacher Equity Definitions web page at <https://www.cde.ca.gov/pd/ee/teacherequitydefinitions.asp>.

## Textbooks & Instructional Materials (School Year 2020-21)

The school determined that each student has sufficient and good quality textbooks, instructional materials, or science lab equipment pursuant to the settlement of *Williams vs. the State of California*.

All students, including English Learners, are given their own individual standards-aligned textbooks or instructional materials, or both, in core subjects, health, foreign languages, and visual and performing arts for use in the classroom and to take home.

The table displays information collected in December 2021 about the quality, currency, and availability of the standards-aligned textbooks and other instructional materials used at the school

<b>TABLE 10: QUALITY, CURRENCY, AVAILABILITY OF TEXTBOOK AND OTHER INSTRUCTIONAL MATERIALS (SCHOOL YEAR 2021-2022) YEAR AND MONTH IN WHICH THE DATA WERE COLLECTED: DECEMBER 2021</b>			
<b>Subject</b>	<b>Textbooks and Other Instructional Materials/ year of Adoption</b>	<b>From Most Recent Adoption?</b>	<b>Percentage Students Lacking Own Assigned Copy</b>
Reading/Language Arts	9th - 12th - English/Language Arts - Houghton Mifflin/Harcourt	2014	0.00%
Mathematics	9th - Algebra 1 - Houghton Mifflin/Harcourt 10th - Geometry - Houghton Mifflin/Harcourt 11th - Algebra II - Houghton Mifflin/Harcourt	2016 2016 2016	0.00%
Science	9th - 10th - Integrated Science I - Houghton Mifflin/Harcourt 11th - 12th - Integrated Science II - Houghton Mifflin/Harcourt 9th - 10th - Earth Science - Houghton Mifflin/ Harcourt 9th - 10th - Physics - Houghton Mifflin/ Harcourt 10th - Biology - Houghton Mifflin/Harcourt 11th - Chemistry - Houghton Mifflin/Harcourt	2012 2012 2012 2012 2012 2012	0.00%
History-Social Science	10th - World History - Houghton Mifflin 11th - United States History - Houghton Mifflin 12th - Economics - McGraw-Hill 12th - United States Government - McGraw-Hill	2014 2014 2018 2018	0.00%
Foreign Language	9th - 10th - Foreign Language - Glencoe	2005	0.00%
Health	10th - 12th - Health - Pearson	2006	0.00%
Visual and Performing Arts	N/A	N/A	N/A
Science Laboratory Equipment (grades 9-12)	N/A	N/A	0.00%

*Note: Cells with N/A values do not require data.*

### School Facility Conditions and Planned Improvements (School Year 2021-22)

Vista Real Charter High School currently operates six resource centers in Ventura County. The original center is located in Oxnard and there are five satellite centers in Camarillo, Santa Paula, Simi Valley, Ventura, and Port Hueneme. All facilities are in safe and functioning condition. All sites meet city and state codes. Vista Real is in the early stages of planning for improvements at the Ventura, Port Hueneme, and Simi Valley sites in order to better meet students' learning needs. These improvements include renovations to update existing sites to meet evolving in- person and distance learning needs such as installing laptop charging hubs and expanding small group instruction spaces.

The chart below displays the results of the most recent facilities inspection at the school. Facilities information was collected in December 2021.

<b>TABLE 12: SCHOOL FACILITY GOOD REPAIR STATUS   DATE OF LAST INSPECTION: DECEMBER 2021 OVERALL SUMMARY OF SCHOOL FACILITY CONDITIONS: EXEMPLARY DATA COLLECTED: DECEMBER 2021</b>				
<b>System Inspected</b>	<b>Rate Good</b>	<b>Rate Fair</b>	<b>Rate Poor</b>	<b>Deficiency &amp; Remedial Actions Taken or Planned</b>
Systems: Gas Leaks, Mechanical/HVAC, Sewer	X			
Interior: Interior Surfaces	X			
Cleanliness: Overall Cleanliness, Pest/ Vermin Infestation	X			
Electrical: Electrical	X			
Restrooms/Fountains: Restrooms, Sinks/Fountains	X			
Safety: Fire Safety, Hazardous Materials	X			
Structural: Structural Damage, Roofs	X			
External: Playground/ School Grounds, Windows/Doors/ Gates/Fences	X			



Overall Facility Rate • Year and month of the most recent inspection: December 2021

TABLE 13: OVERALL RATING				
Exemplary	Good	Fair	Poor	Deficiency & Remedial Actions Taken or Planned
X				

Overall Summary of School Facility Conditions: Exemplary

B. PUPIL OUTCOMES

State Priority: Pupil Achievement

The SARC provides the following information relevant to the State priority: Pupil Achievement (Priority 4):

- Statewide assessments (i.e., California Assessment of Student Performance and Progress [CAASPP] System includes the Smarter Balanced Summative Assessments for students in the general education population and the California Alternate Assessments [CAAs] for English language arts/literacy [ELA] and mathematics given in grades three through eight and grade eleven. Only eligible students may participate in the administration of the CAAs. CAAs items are aligned with alternate achievement standards, which are linked with the Common Core State Standards [CCSS] for students with the most significant cognitive disabilities).

The CAASPP System encompasses the following assessments and student participation requirements:

- Smarter Balanced Summative Assessments and CAAs for ELA in grades three through eight and grade eleven.
  - Smarter Balanced Summative Assessments and CAAs for Mathematics in grades three through eight and grade eleven.
  - California Science Test (CAST) and CAAs for Science in grades five, eight, and once in high school (i.e., grade ten, eleven, or twelve).
- SARC Reporting in the 2020-2021 School Year Only  
Where it was the most viable option, LEAs were required to administer the statewide summative assessments for ELA and mathematics. Where a statewide summative assessment was not the most viable option for the LEA (or for one or more grade-level[s] within the LEA) due to the pandemic, LEAs were allowed to report results from a different assessment that met the criteria established by the State Board of Education (SBE) on March 16, 2021. The assessments were required to be:
    - Aligned with CA CCSS for ELA and mathematics;
    - Available to students in grades 3 through 8, and grade 11; and
    - Uniformly administered across a grade, grade span, school, or district to all eligible students.

- Options: Note that the CAAs could only be administered in-person following health and safety requirements. If it was not viable for the LEA to administer the CAAs in person with health and safety guidelines in place, the LEA was directed to not administer the tests. There were no other assessment options available for the CAAs. Schools administered the Smarter Balanced Summative Assessments for ELA and mathematics, other assessments that meet the SBE criteria, or a combination of both, and they could only choose one of the following:
  - Smarter Balanced ELA and mathematics summative assessments;
  - Other assessments meeting the SBE criteria; or
  - Combination of Smarter Balanced ELA and mathematics summative assessments and other assessments.

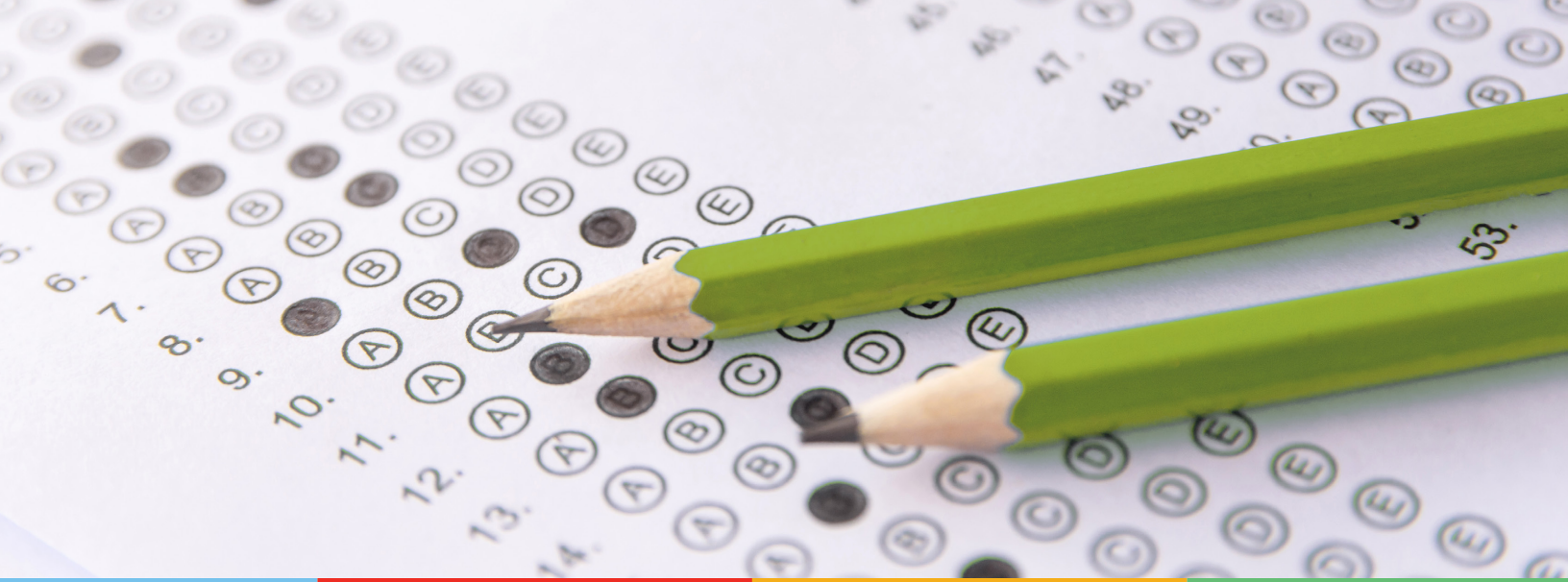
- College and Career Ready: The percentage of students who have successfully completed courses that satisfy the requirements for entrance to the University of California and the California State University, or career technical education sequences or programs of study.

Note: As an independent charter school, the school's program, resources, and administration are run independently from the sponsoring district, so there is no district data to report for comparison in this section

TABLE 14: CAASPP TEST RESULTS IN ELA AND MATHEMATICS FOR ALL STUDENTS GRADES THREE THROUGH EIGHT AND GRADE ELEVEN TAKING AND COMPLETING A STATE-ADMINISTERED ASSESSMENT				
PERCENT OF STUDENTS MEETING OR EXCEEDING THE STATE STANDARD				
Subject	School 2019-2020	School 2020-2021	State 2019-2020	State 2020-2021
English Language Arts/Literacy (Grades 3-8 and 11)	N/A	N/A	N/A	N/A
Mathematics (Grades 3-8 and 11)	N/A	N/A	N/A	N/A

Note: The 2019-2020 data cells with N/A values indicate that the 2019-2020 data are not available due to the COVID-19 pandemic and resulting summative test suspension. The Executive Order N-30-20 was issued which waived the assessment, accountability, and reporting requirements for the 2019-2020 school year.

Note: The 2020-2021 data cells have N/A values because these data are not comparable to other year data due to the COVID-19 pandemic during the 2020-2021 school year. Where the CAASPP assessments in ELA and/or mathematics is not the most viable option, the LEAs were allowed to administer local assessments. Therefore, the 2020-2021 data between school years for the school, district, state are not an accurate comparison. As such, it is inappropriate to compare results of the 2020-2021 school year to other school years.



**TABLE 15: CAASPP TEST RESULTS IN ELA BY STUDENT GROUP FOR STUDENTS TAKING AND COMPLETING  
A STATE-ADMINISTERED ASSESSMENT  
GRADES THREE THROUGH EIGHT AND GRADE ELEVEN (SCHOOL YEAR 2020-2021)**

Student Group	Total Enrollment	Number Tested	Percent Tested	Percent Not Tested	Percent Met or Exceeded
All Students	407	262	64%	36%	42%
Female	228	147	64%	36%	39%
Male	179	115	64%	36%	46%
American Indian or Alaska Native	*	0	0%	100%	0%
Asian	0	0	0%	0%	0%
Black or African American	0	0	0%	0%	0%
Filipino	0	0	0%	0%	0%
Hispanic or Latino	293	188	64%	36%	39%
Native Hawaiian or Pacific Islander	0	0	0%	0%	0%
Two or More Races	13	12	92%	8%	58%
White	92	59	64%	36%	51%
English Learners	31	17	55%	45%	12%
Foster Youth	*	*	100%	0%	0%
Homeless	17	*	35%	65%	33%
Military	*	*	100%	0%	100%
Socioeconomically Disadvantaged	281	183	65%	35%	35%
Students Receiving Migrant Education Services	0	0	0%	0%	0%
Students with Disabilities	58	35	60%	40%	9%

Note: N/T values indicate that this school did not test students using the CAASPP for ELA.

Note: Double dashes (--) appear in the table when the number of students is ten or less, either because the number of students in this category is too small for statistical accuracy or to protect student privacy.

To protect student privacy, data are suppressed (\*), if the cell size is 10 or less. Data is N/A, not available, because the CDE did not provide for the student group.

**TABLE 16: CAASPP TEST RESULTS IN MATHEMATICS BY STUDENT GROUP FOR STUDENTS TAKING  
AND COMPLETING A STATE-ADMINISTERED ASSESSMENT  
GRADES THREE THROUGH EIGHT AND GRADE ELEVEN (SCHOOL YEAR 2020-2021)**

Student Group	Total Enrollment	Number Tested	Percent Tested	Percent Not Tested	Percent Met or Exceeded
All Students	407	244	60%	40%	9%
Female	228	132	58%	42%	7%
Male	179	112	63%	37%	12%
American Indian or Alaska Native	0	0	0%	0%	0%
Asian	0	0	0%	0%	0%
Black or African American	0	0	0%	0%	0%
Filipino	0	0	0%	0%	0%
Hispanic or Latino	293	174	59%	41%	9%
Native Hawaiian or Pacific Islander	0	0	0%	0%	0%
Two or More Races	13	11	85%	15%	18%
White	92	56	61%	39%	7%
English Learners	31	14	45%	55%	0%
Foster Youth	0	0	0%	0%	0%
Homeless	17	*	18%	82%	0%
Military	*	*	100%	0%	100%
Socioeconomically Disadvantaged	281	169	60%	40%	8%
Students Receiving Migrant Education Services	0	0	0%	0%	0%
Students with Disabilities	58	35	60%	40%	7%

Note: N/T values indicate that this school did not test students using the CAASPP for Mathematics.

Note: Double dashes (--) appear in the table when the number of students is ten or less, either because the number of students in this category is too small for statistical accuracy or to protect student privacy.

To protect student privacy, data are suppressed (\*), if the cell size is 10 or less. Data is N/A, not available, because the CDE did not provide for the student group.

Note: ELA and Mathematics test results include the Smarter Balanced Summative Assessment and the California Alternate Assessment. The "Percent Met or Exceeded" is calculated by taking the total number of students who met or exceeded the standard on the Smarter Balanced Summative Assessment plus the total number of students who met the standard on the CAAs divided by the total number of students who participated in both assessments.

Note: The school did not administer a local assessment during the 2019-2020 school year due to COVID-19.

**TABLE 19: CAASPP TEST RESULTS IN SCIENCE FOR ALL STUDENTS  
GRADES FIVE, EIGHT, AND HIGH SCHOOL  
PERCENTAGE OF STUDENTS MEETING OR EXCEEDING THE STATE STANDARD**

Subject	School 2019-2020	School 2020-2021	State 2019-2020	State 2020-2021
Science (grades 5, 8 and high school)	N/A	9.0%	N/A	Information Not Available

Note: The 2019-2020 data cells with N/A values indicate that the 2019-2020 data are not available due to the COVID-19 pandemic and resulting summative testing suspension. The Executive Order N-30-20 was issued which waived the assessment, accountability, and reporting requirements for the 2019-2020 school year.

Note: For any 2020-2021 data cells with N/T values indicate that this school did not test students using the CAASPP for Science.

**TABLE 20: CAASPP TEST RESULTS IN SCIENCE BY STUDENT GROUP  
GRADES FIVE, EIGHT, AND HIGH SCHOOL (SCHOOL YEAR 2020-2021)**

Student Group	Total Enrollment	Number Tested	Percent Tested	Percent Not Tested	Percent Met or Exceeded
All Students	60	47	67%	33%	9%
Female	46	34	74%	26%	6%
Male	24	13	54%	46%	15%
American Indian or Alaska Native	0	0	0%	0%	0%
Asian	0	0	0%	0%	0%
Black or African American	0	0	0%	0%	0%
Filipino	0	0	0%	0%	0%
Hispanic or Latino	47	32	68%	32%	6%
Native Hawaiian or Pacific Islander	0	0	0%	0%	0%
Two or More Races	*	*	33%	67%	0%
White	17	12	71%	29%	17%
English Learners	*	*	100%	0%	0%
Foster Youth	0	0	0%	0%	0%
Homeless	0	0	0%	0%	0%
Military	0	0	0%	0%	0%
Socioeconomically Disadvantaged	39	24	62%	38%	0%
Students Receiving Migrant Education Services	0	0	0%	0%	0%
Students with Disabilities	*	*	63%	37%	0%

Note: N/T values indicate that this school did not test students using the CAASPP for Science.

To protect student privacy, data are suppressed (\*), if the cell size is 10 or less. Data is N/A, not available, because the CDE did not provide for the student group.

### Career Technical Education (CTE) Programs (School Year 2020-21)

Vista Real recognizes the need to integrate core academic knowledge with technical skills in order to be successful in today's modern workforce and continues to develop its Career Technical Education (CTE) program. The school is committed to bringing students greater opportunities in developing these skills through continued efforts to expand our relationships with local businesses, trade schools, and community colleges.

Vista Real offers several professional skills and CTE courses including Child Development, The Global Logistics Pathway, Starbucks Partnership Program, and The West Hills College Business pathway. Additionally, we have specific curriculum centered around development of career skills. These courses include Introduction to Computers & Information Technology and Professional Skills. Vista Real also partners with the Ventura County Office of Education to give students access to their Career Education Center, opening up opportunities for students to take CTE courses in auto body, game design, medial assisting, and more.

This table displays information about participation in the school's Career Technical Education (CTE) programs.

**TABLE 22: CAREER TECHNICAL EDUCATION (CTE) PARTICIPATION (SCHOOL YEAR 2020-2021)**

Measure	CTE Program Participation
Number of Pupils Participating in CTE	188
Percent of Pupils that Complete a CTE Program and Earn a High School Diploma	28%
Percent of CTE Courses that are Sequenced or Articulated Between the School and Institutions of Postsecondary Education	29%



## UC/CSU Course Completion

Students are encouraged to take University of California/ California State University (UC/CSU) preparatory courses if they plan to attend a four-year university. All students must pass each course with a grade of 'C' or better.

**TABLE 23: COURSE ENROLLMENT/COMPLETION OF UNIVERSITY OF CALIFORNIA (UC) AND/OR CALIFORNIA STATE UNIVERSITY (CSU) ADMISSION REQUIREMENTS**

UC/CSU Course Measure	Percent
2020-2021 Pupils Enrolled in Courses Required for UC/CSU Admission	97.40%
2019-2020 Graduates Who Completed All Courses Required for UC/CSU Admission	0%

\*Duplicate Count (one student can be enrolled in several courses. )

### State Priority: Other Pupil Outcomes

The SARC provides the following information relevant to the State priority: Other Pupil Outcomes (Priority 8):

- Pupil outcomes in the subject area of physical education

### State Priority: Pupil Engagement

The SARC provides the following information relevant to the State priority: Other Pupil Outcomes (Priority 8):

- Pupil outcomes in the subject area of physical education

### Physical Fitness

In the spring of each year, all California schools are required by the state to administer a physical fitness test to students in the fifth, seventh, and ninth grades. The physical fitness test is a standardized evaluation that measures each student's ability to perform fitness tasks in six major areas. Students who meet or exceed the standards in all six fitness areas are considered to be physically fit or in the "Healthy Fitness Zone" (HFZ).

The table displays the percent of students at the school meeting fitness standards by grade level, for the most recent testing period. Due to the COVID-19 pandemic, Executive Order N-56-20 was issued. This order waived the requirement to administer the physical fitness performance test results for the 2019-2020 school year. The most current data available to report is from the 2018-19 school year and is reflected in the table. Detailed information regarding this test may be found at the CDE website at <http://www.cde.ca.gov/ta/tg/pf/>.

**TABLE 24: CALIFORNIA PHYSICAL FITNESS TEST RESULTS (SCHOOL YEAR 2020-2021)**

Grade Level	Percentage of Students Meeting Four of Six Fitness Standards	Percentage of Students Meeting Five of Six Fitness Standards	Percentage of Students Meeting Six of Six Fitness Standards
9	N/A	N/A	N/A

Note: Due to the COVID-19 crisis, the Physical Fitness Test was suspended during the 2020-2021 school year and therefore no data are reported.

## C. ENGAGEMENT

### State Priority: Parental Involvement

The SARC provides the following information relevant to the State priority: Parental Involvement (Priority 3):

- Efforts the school district makes to seek parent input in making decisions regarding the school district and at each school site

### Opportunities for Parental Involvement (School Year 2021-22)

Vista Real encourages regular parental involvement throughout the school year. We have several opportunities for formal participation including Parent Information Nights, Parent Advisory Committee and English Learner Advisory Committee. These Committees are held quarterly each school year and are avenues for families to provide advice in planning, developing, implementing, and evaluating our school program. Parent educational partners are encouraged to participate in the development of the Local Control and Accountability Plan, the WASC accreditation report, and grant plans such as the Expanded Learning Opportunities Grant. They are asked to provide input on the progress of these plans throughout the year. In addition to this, parents also attend informational workshops on issues of concern, such as vaping, teen drinking, and cyber safety. Vista Real also highly encourages Parent/Family attendance at the school's annual Open House, senior nights, and awards nights as well as other informal and formal meetings throughout the school year. Notices for all meetings are sent to parents/families in advance via email, phone calls, ParentSquare, and social media. For PAC and ELAC meetings, notices are posted to the school website and at each site location, 72 hours in advance. These meetings are open to all educational partners from the community. Parent Conferences and Open House events are also held during the school year to facilitate communication between parents, teachers, students, and community partners. In addition to these formal events, parent educational partners are encouraged to call and meet with their child's teacher as needed to support academic progress. Additionally, they may contact the local school office at any time or reach out to their school site administrator directly.

The SARC provides the following information relevant to the State priority: Pupil Engagement (Priority 5):

- High school dropout rates;
- High school graduation rates; and
- Chronic Absenteeism



### Dropout & Graduation Rates

In knowing the “at risk of dropping out” status of the majority of students enrolling in the school, we begin interventions from the point of enrollment. At the onset of their education with Vista Real, students complete credit 1 of Professional Skills and receive a personalized learning plan to meet their goals. Additionally, students are supported in determining their college and career interests and teachers and counselors help to map out a pathway to reach those goals. Teachers then build upon this throughout the year to support academic planning as well as college and career readiness. With the support of a comprehensive team of trauma-informed staff, Vista Real seeks to address academic risk while simultaneously addressing experiential factors that may be contributing that that risk.

Students also participate in academic assessments, such as NWEA, after enrollment. The assessments aid staff and students in understanding the strengths and areas of growth that the student may possess. More importantly, this method helps students receive any remedial help they may need and ensures students are not enrolling in courses beyond their current academic abilities. The availability of unlimited, free tutoring also serves as an intervention for students when they struggle with particular subjects or courses. Together, all early interventions are intended to promote attendance and reduce the likelihood of student dropouts. However, these standard interventions are not always met with student success.

When faculty and staff (at school) witness a decline in the attendance of a particular student, more specific and targeted interventions take place in progressive steps:

- A missed day of school results in a call home from the student’s teacher
- A pattern of missed school days results in a parent-teacher or adult student-teacher conference
- A continued pattern of missed school days after a teacher conference results in an Attendance Intervention Meeting (A.I.M). In this meeting the parent or adult student meets with the Student Retention Support specialist to discuss the legal requirements of school attendance for minors and problems adults may face as high school dropouts. If the student/parent cannot be reached, a home visit will be conducted.
- A continued pattern of missed school days after an A.I.M. intervention is escalated to a Student Retention Meeting (S.R.M) intervention. Student Retention Meetings include the School Counselor, Supervising Teacher, School Administrator, and the Student Retention Support specialist. When the student and parent meet with the S.R.M. team, serious conversations take place about the appropriateness of independent study for the student, school options, and the serious long-term consequences of dropping out of school.

Note: The California Department of Education DataQuest system reports one year dropout rates up to 2017 and one year graduation rates determined through the California School Dashboard. The school is a Dashboard Alternative Status School (DASS) as a result of the student population served. The tables display the most current data available. N/A is displayed when the school is new and there is no data available to report.

TABLE 26: DROPOUT RATE AND GRADUATION RATE (ONE-YEAR DASS COHORT RATE)						
Indicator	School 1-Year Cohort Rate 2018-2019	School 1-Year Cohort Rate 2019-2020	School 1-Year Cohort Rate 2020-2021	State 4-Year Cohort Rate 2018-2019	State 4-Year Cohort Rate 2019-2020	State 4-Year Cohort Rate 2020-2021
Dropout Rate	7.40%	6.80%	10.5%	9.00%	8.90%	N/A
Graduation Rate	73%	62.6%	67.6%	84.5%	84.30%	N/A





**TABLE 27: GRADUATION RATE BY STUDENT GROUP (ONE-YEAR DASS COHORT RATE)  
(SCHOOL YEAR 2020-2021)**

Student Group	Number of Students in Cohort	Number of Cohort Graduates	Cohort Graduation Rate
All Students	248	165	66.5%
Female	145	100	69.0%
Male	102	65	63.7%
Non-Binary	*	0	0%
American Indian or Alaska Native	*	*	100%
Asian	*	*	66.7%
Black or African American	*	*	50.0%
Filipino	0	0	0%
Hispanic or Latino	159	103	64.8%
Native Hawaiian or Pacific Islander	0	0	0%
Two or More Races	*	*	55.6%
White	71	50	70.4%
English Learners	23	16	69.6%
Foster Youth	*	*	83.3%
Homeless	*	*	60.0%
Socioeconomically Disadvantaged	121	83	68.6%
Students Receiving Migrant Education Services	0	0	0%
Services with Disabilities	40	24	60.0%

For information on the Four-Year Adjusted Cohort Graduation Rate (ACGR), visit the CDE Adjusted Cohort Graduation Rate web page at <https://www.cde.ca.gov/ds/ad/acgrinfo.asp>.

To protect student privacy, data are suppressed (\*), if the cell size is 10 or less. Data is N/A, not available, because the CDE did not provide for the student group.

## Chronic Absenteeism

The current Chronic Absentee rate is not calculated in a manner for non-classroom based DASS programs to reflect the nature of the students served. According to the CDE, students are determined to be chronically absent if they were eligible to be considered chronically absent at the selected level during the academic year and they were absent for 10% or more of the days they were expected to attend. Vista Real follows all of the required CA State School Dashboard requirements.

TABLE 28: CHRONIC ABSENTEEISM BY STUDENT GROUP SCHOOL YEAR 2020-2021				
Student Group	Cumulative Enrollment	Chronic Absenteeism Eligible Enrollment	Chronic Absenteeism Count	Chronic Absenteeism Rate
All Students	2,000	1,740	1,416	81.4%
Female	955	810	666	82.2%
Male	1,043	928	748	80.6%
Non-Binary	*	*	*	*
American Indian or Alaska Native	*	*	*	100%
Asian	11	*	*	77.8%
Black or African American	27	25	19	76.0%
Filipino	*	*	*	71.4%
Hispanic or Latino	1,466	1280	1060	82.8%
Native Hawaiian or Pacific Islander	*	*	*	100%
Two or More Races	48	40	32	80.0%
White	417	365	281	77.0%
English Learners	242	204	186	91.2%
Foster Youth	93	71	59	83.1%
Homeless	142	122	114	93.4%
Socioeconomically Disadvantaged	1,544	1,355	1,119	82.6%
Students Receiving Migrant Education Services	*	*	*	100%
Services with Disabilities	385	329	270	82.1%

To protect student privacy, data are suppressed (\*), if the cell size is 10 or less. Data is N/A, not available, because the CDE did not provide for the student group.

## State Priority: School Climate

The SARC provides the following information relevant to the State priority: School Climate (Priority 6):

- Pupil suspension rates;
- Pupil expulsion rates; and
- Other local measures on the sense of safety



## Suspensions & Expulsions

The table displays the suspension and expulsion rates at the school and throughout the state. Expulsions occur only when required by law or when all other alternatives are exhausted. Due to the COVID-19 pandemic, the 2019-2020 suspensions and expulsions rate data are not comparable to prior year data. Since there was no in-person learning for the entire 2019-2020 school year, it would be inappropriate to make any comparisons of the suspensions and expulsions rates in the 2019-2020 school year to the rates in prior school years. Additionally, please note that the suspension and expulsion rate for the state was not available at time of publication.

TABLE 29: SUSPENSIONS AND EXPULSIONS (DATA COLLECTED BETWEEN JULY THROUGH JUNE, EACH FULL SCHOOL YEAR RESPECTIVELY)				
Rate	School 2018-2019	School 2020-2021	State 2018-2019	State 2020-2021
Suspension	0%	0%	3.5%	N/A
Expulsion	0%	0%	0.10%	N/A

Note: Data collected during the 2020-21 school year may not be comparable to earlier years of this collection due to differences in learning mode instruction in response to the COVID-19 pandemic.

TABLE 30: SUSPENSIONS AND EXPULSIONS FOR SCHOOL YEAR 2019-2020 ONLY (DATA COLLECTED BETWEEN JULY THROUGH FEBRUARY, PARTIAL SCHOOL YEAR DUE TO THE COVID-19 PANDEMIC)		
Rate	School 2019-2020	State 2019-2020
Suspension	0.76%	2.5%
Expulsion	0.0%	0.05%

Note: The 2019-2020 suspensions and expulsions rate data are not comparable to other year data because the 2019-2020 school year is a partial school year due to the COVID-19 crisis. As such, it would be inappropriate to make any comparisons in rates of suspensions and expulsions in the 2019-2020 school year compared to other school years.

**TABLE 31: SUSPENSIONS AND EXPULSIONS BY  
STUDENT GROUP  
(SCHOOL YEAR 2020-2021)**

Student Group	Suspensions Rate	Expulsions Rate
All Students	0%	0%
Female	0%	0%
Male	0%	0%
Non-Binary	0%	0%
American Indian or Alaska Native	0%	0%
Asian	0%	0%
Black or African American	0%	0%
Filipino	0%	0%
Hispanic or Latino	0%	0%
Native Hawaiian or Pacific Islander	0%	0%
Two or More Races	0%	0%
White	0%	0%
English Learners	0%	0%
Foster Youth	0%	0%
Homeless	0%	0%
Socioeconomically Disadvantaged	0%	0%
Students Receiving Mi- grant Education Services	0%	0%
Services with Disabilities	0%	0%

## School Safety (School Year 2021-22)

Our school Safety Plan consists of our Injury and Illness Prevention Program, Emergency Procedures, and Section 4 of our Employee handbook. Sponsoring School Districts ask for these safety programs as part of our charter's renewal process. We review our School Safety Plans annually and update them if necessary.

The safety of students and staff is a primary concern for the school. Both teachers and administrators supervise the students throughout the school day to ensure a safe and positive learning environment. Both staff and student school IDs are expected to be displayed at all times, and visitor to the sites must register in at the front office to receive appropriate identification badges. The school safety plan was last updated and reviewed with school staff in December 2021.

## D. OTHER SARC INFORMATION

The information in this section is required to be in the SARC but is not included in the state priorities for LCFF.

### Class Size

Due to the nature of independent study, class size distribution data is unavailable for this school.

### Counseling & Support Staff (School Year 2020-2021)

Vista Real seeks to assist students in their social, emotional, and personal development as well as academics. The school provides special attention to students who experience achievement problems, difficulty coping with personal and family problems, trouble with decision making, or handling peer pressure.

The following is a list of support staff available to students at the school.

TABLE 39: RATIO OF PUPILS TO ACADEMIC COUNSELOR (SCHOOL YEAR 2020-2021)	
Title	Ratio
Pupils to Academic Counselor*	1:299

\*One full time equivalent (FTE) equals one staff member working full time; one FTE could also represent two staff members who each work 50 percent of full time.

TABLE 40: STUDENT SUPPORT SERVICES STAFF (SCHOOL YEAR 2020-2021)	
Title	Number of FTE* Assigned to School
Counselor (Academic, Social/Behavioral or Career Development)	5.0
Library Media Teacher (Librarian)	0
Library Media Services Staff (Paraprofessional)	0
Psychologist	1.0
Social Worker	0
Nurse	0
Speech/Language/Hearing Specialist	0
Resource Specialist (non-teaching)	0
Other	0

\*One full time equivalent (FTE) equals one staff member working full time; one FTE could also represent two staff members who each work 50 percent of full time.

### School Expenditures (Fiscal Year 2019-20)

The table provides a comparison of the school's per pupil funding from unrestricted sources with other schools throughout the state. Supplemental/Restricted expenditures

come from money whose use is controlled by law or donor. Money designated for specific purposes by the district or governing board is not considered restricted. Basic/Unrestricted expenditures, except for general guidelines, are not controlled by law or donor. The California Department of Education issued guidance to the district in August 2018 regarding how to calculate school-level per-pupil expenditures.

For detailed information on school expenditures for all districts in California, see the CDE Current Expense of Education & Per-pupil Spending Web page at <http://www.cde.ca.gov/ds/fd/ec/>.

For information on teacher salaries for all districts in California, see the CDE Certificated Salaries & Benefits Web page at <http://www.cde.ca.gov/ds/fd/cs/>.

To look up expenditures and salaries for a specific school district, see the Ed-Data Web site at: <http://www.ed-data.org>.

### School Site Teacher Salaries (Fiscal Year 2019-2020)

The Average Teacher Salaries table illustrates the average teacher salary at the school and compares it to the average teacher salary throughout the state.

TABLE 41: EXPENDITURES PER PUPIL AND SCHOOL SITE TEACHER SALARIES (FISCAL YEAR 2019-2020)				
Level	Total Expenditures Per Pupil	Expenditures Per Pupil (Restricted)	Expenditures Per Pupil (Unrestricted)	Average Teacher Salary
School Site	\$12,222.00	\$2,010.00	\$13,127.00	\$74,893.00
State	NA	NA	\$13,268.66	\$81,807.00
Percent Difference School Site and State	N/A	N/A	-8.92%	0.67%

Note: Cells with N/A values do not require data.

### Types of Services Funded (Fiscal Year 2020-2021)

Utilizing all of the funding sources provided to the school, we provide the following programs for students:

- Special Education programs for SELPA, students with special needs
- English Language Development - support for students in English Language acquisition - instructional and support methods
- Tutoring support - one-on-one, walk-in, in-person, and virtual tutoring support
- General operations -services, materials, technology, salaries, benefits, and support to the general education

### School Site Teacher Salaries (Fiscal Year 2019-20)

The Average Teacher Salaries table illustrates the average teacher salary at the school and compares it to the average teacher salary throughout the state.

TABLE 43: TEACHER AND ADMINISTRATIVE SALARIES (FISCAL YEAR 2019-2020)		
Category	LEA Amount	State Average for State In Same Category
Beginning Teacher Salary	\$75,000.00	\$50, 546.00
Mid-Range Teacher Salary	\$80,000.00	\$81,807.00
Highest Teacher Salary	\$85,000.00	\$103,463.00
Average Principal Salary (High)	\$120,000.00	\$140,004.00
Superintendent Salary	\$157,500.00	\$182,878.00
Percent of Budget for Teacher Salaries	26.04%	30.89%
Percent of Budget for Administrative Salaries	5.98%	5.68%

For detailed information on salaries, see the CDE Certificated Salaries & Benefits web page at <https://www.cde.ca.gov/ds/fd/cs/>.

### Advanced Placement (AP) Classes (School Year 2020-2021)

TABLE 44: ADVANCED PLACEMENT (AP) COURSES (SCHOOL YEAR 2020-2021)	
PERCENT OF STUDENTS IN AP COURSES: 0% DATA PULLED FROM CALPADS	
Subject	Number of AP Courses Offered*
Computer Science	0
English	0
Fine and Performing Arts	0
Foreign Language	0
Mathematics	0
Science	0
Social Science	0
Total AP Courses Offered*	0

\*Where there are student course enrollments of at least one student.

### Professional Development

The school's certificated staff members and administrators participate in ongoing professional development to improve its curriculum and delivery of instruction. Professional development sessions are held throughout the school year and focus on a wide variety of topics aimed at trauma informed care, strengthening pedagogy, and content knowledge to meet the needs of the school's diverse learners. Special emphasis is placed on targeting the unique needs of its English language learners,

special education students, and trauma-informed practices. School staff also participate in a variety of development events for continuous improvement. These events include Professional Learning Communities (PLC), department meetings, software trainings, etc. The PLC process of continuous school improvement is characterized by utilizing data to drive instructional decision making to improve academic outcomes for students. The process is driven by teachers who are actively engaged in identifying areas where students show a need for improvement and targeting those areas through the use of evidence based instructional strategies. Teachers and staff collaborate for up to two hours weekly to exclusively focus on this process of continuous inquiry.

In addition, school administrators participate in ongoing professional learning with the focus being on effective school leadership practices and instructional leadership. The Administration Team identifies school-wide focuses for its campuses each year for professional development and, along with Regional Instructional Specialists, take the lead in organizing staff development opportunities and ongoing instructional coaching. Topics covered through professional developments are based on the needs of the school, suggestions made by the school staff through department meetings and/or staff surveys, and through the collection and analysis of data indicating school needs and/or needed changes.

The school also provides Induction training to its preliminary credentialed teachers through its partnership with the Ventura County Office of Education. Participating teachers are assigned a support provider from their assigned site and participate in all required Induction activities. Newly hired teachers are also partnered with existing teachers for the first year and participate in a required on the job training for the purpose of familiarizing them with the program and mission of the school. The school's special education teachers receive annual training on new procedures and processes, as well as effective instructional strategies for improving academic achievement. In addition to ongoing professional development opportunities offered locally, staff also participates in the California Charter Schools Association's annual CCSA Conferences, annual A-plus+ conferences, and other conferences sponsored by local county offices of education.

TABLE 45: PROFESSIONAL DEVELOPMENT			
Measure	2019-2020	2020-2021	2021-2022
Number of school days dedicated to Staff Development and Continuous Improvement	10	15	24